



AMERICAN

# art

COLLECTOR



*Handwritten signature or mark in the bottom right corner.*

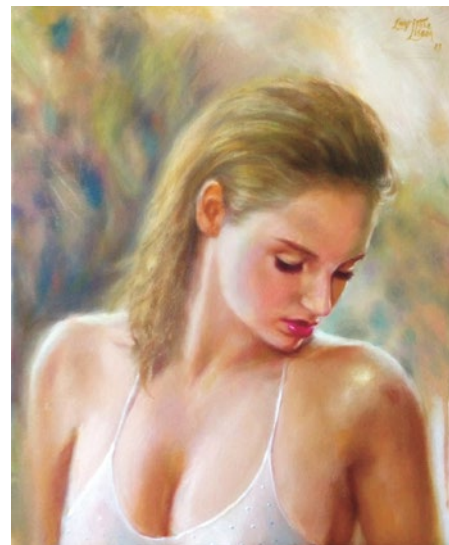
## Artist Information

(305) 586-1260 | [paintings@charlottelisboafineart.com](mailto:paintings@charlottelisboafineart.com)  
[www.charlottelisboafineart.com](http://www.charlottelisboafineart.com)

CHARLOTTE LISBOA / ARTIST FOCUS



1



2



3

# Emotion and sensuality

**B**razilian-French artist Charlotte Lisboa finds her inspiration in the serenity and softness of her subjects; these drawings and paintings are infused with emotion and sensuality that merges spirit with physicality. Her realist-impressionistic figural works and portraits are presented in backgrounds of texture with movement and fresh color, expressing a tangible sense of life. Lisboa's influences range from Renoir and Sargent to Rothko and Klimt, to name a few.

Lisboa studied in the United States and received degrees from the University of Miami, followed by her training in figure drawing. In addition, she always refreshes her views in a variety of workshops with many of today's contemporary masters. Lisboa believes that her art is an intense mode of expressing her individualism

to the world. "My goal is to take my subjects out of the context in which they exist to a world outside the limits of day-to-day reality," she says.

Lisboa's art is exhibited around Europe and the United States, and is represented by Agora Gallery in New York and Art Fusion Gallery in Miami, Florida. Future exhibits include Art Fusion Gallery in Wynwood Art District (part of *Art Basel Miami*); a show at Grand Palais in Paris, France, November 25; a show at the Ritz Four Seasons in Lisbon, Portugal, in January 2015; and *Art Expo Milano* in Milan, Italy, from July to September 2015. Her new studio opens this fall in Doral, Florida, near her home and will have a custom-built gallery section with some of her most recent creations. Lisboa is a member of Portrait Society of America and Oil Painters of America, among others. ●

1  
*Scent*, charcoal and  
graphite, 24 x 18"

2  
*Essence*, oil on linen,  
24 x 20"

3  
*Free*, oil on board,  
12 x 12"