

Animasymbolism:

The Conscious Paradigm of Fred Mou

A solo exhibition presented by Agora Gallery

September 10, 2010 - October 1, 2010

530 West 25th St., Chelsea, New York

Agora
Gallery

Animasymbolism: The Conscious Paradigm of Fred Mou

A solo exhibition presented by Agora Gallery

September 10th - October 1st 2010

Opening Reception: Thursday, September 16th, 6-8pm

Gallery Hours: Tuesday - Saturday, 11am-6pm

Fred Mou



The exploration of the tension between flow and stasis is a major theme in the work of **Fred Mou**. Although his images often spread out on his canvas like vines, and seem to flower into a mix of the identifiable and the abstract, it is clear that the artist carefully chooses very specific shapes and forms that have a certain psychological resonance for the viewer. The human brain has evolved in a unique way, and as a result responds to forms in a particular fashion. The genius of Fred Mou lies in his ability to conjure dramatic tableaux that exploit our inherent attraction to the balance between lines and shapes.

He also uses a myriad of colors in his elaborate creations, including sea blues, sunshine yellows and fiery reds. They all connect and twirl about one another like DNA strands or lightning, like fire and water. These are all part of the visual language that Fred taps into with his painting. He merges a personal vocabulary with universal forms and builds a bridge between the specific aesthetic gesture and the archetypal essences he is striving to reveal. A union of opposites lies at the heart of his stunning explorations, and his work is always an expression of a dynamic view of our world and ourselves.



Bamboo Acrylic on Paper 16.5" x 12"



Human Shells Acrylic on Paper 14" x 11"



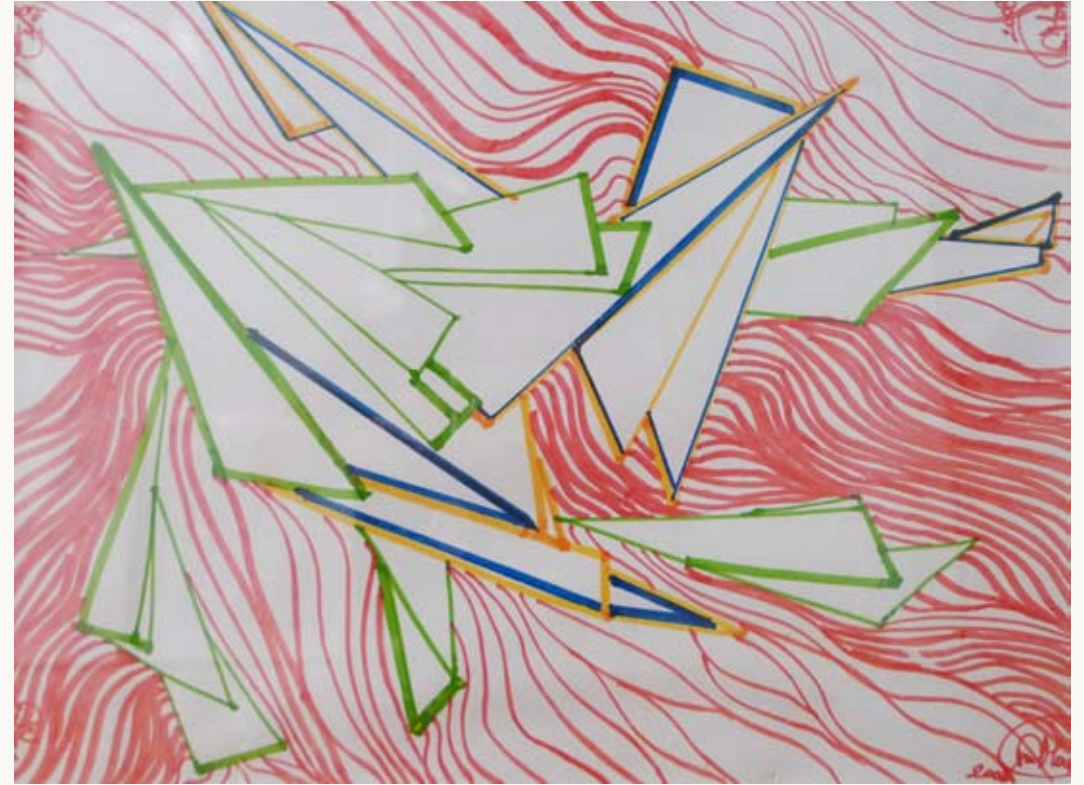
Nature Sea Acrylic on Paper 16.5" x 12"



Pink Boats Acrylic on Paper 16.5" x 12"



Flying Metal Acrylic on Paper 12" x 16.5"



Space Crystal Acrylic on Paper 12" x 16.5"



Rounds Acrylic on Paper 16.5" x 12"



Sea Boats Acrylic on Paper 16.5" x 12"



Space Houses Acrylic on Paper 16.5" x 12"



Streets No Where Acrylic on Paper 18.5" x 11"



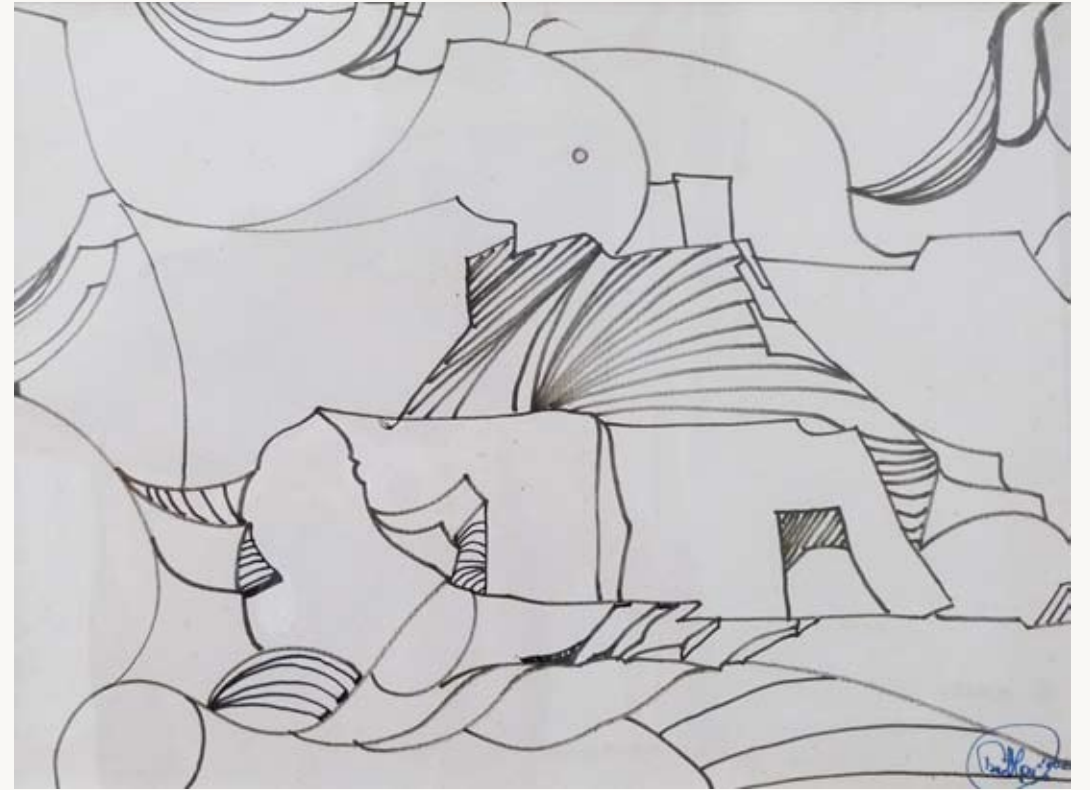
Shells Are Growing Acrylic on Paper 16.5" x 12"



Shells Acrylic on Paper 16.5" x 12"



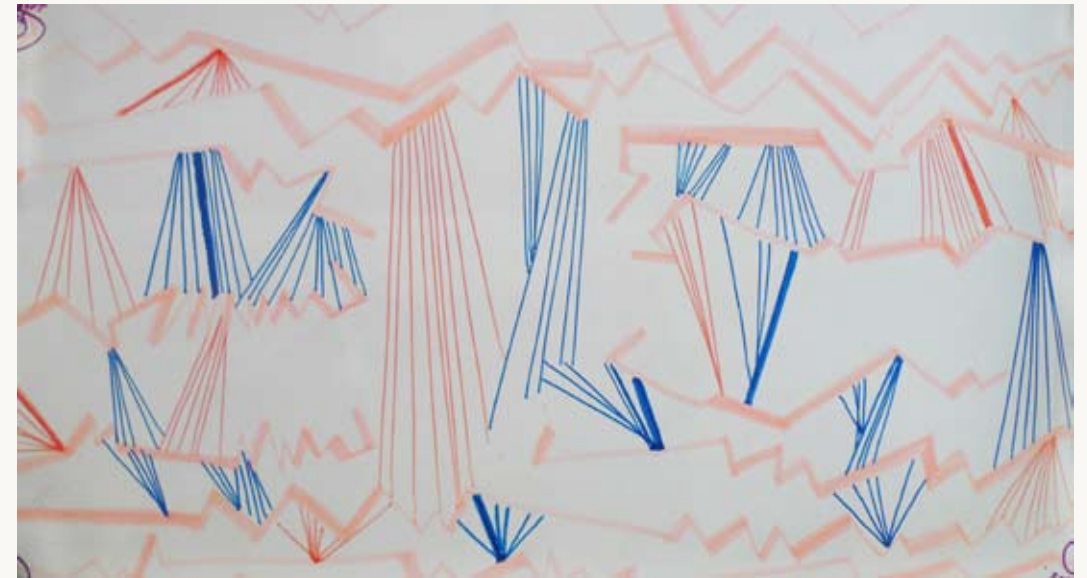
To Romantic Life Acrylic on Paper 16.5" x 12"



No Nature Acrylic on Paper 12" x 16.5"



Going from Water to Space Acrylic on Paper 13" x 22"



Electric Jet Acrylic on Paper 11" x 18.5"

Agora Gallery

Chelsea, New York City
212-226-4151 Fax:212-966-4380
WWW.AGORA-GALLERY.COM
WWW.ART-MINE.COM

© 2006 - Agora Gallery - All Rights Reserved

The copyrights of artwork contained within this booklet are retained by the artists. Reproduction of any published material (images or text) is prohibited without the written permission of Agora Gallery.